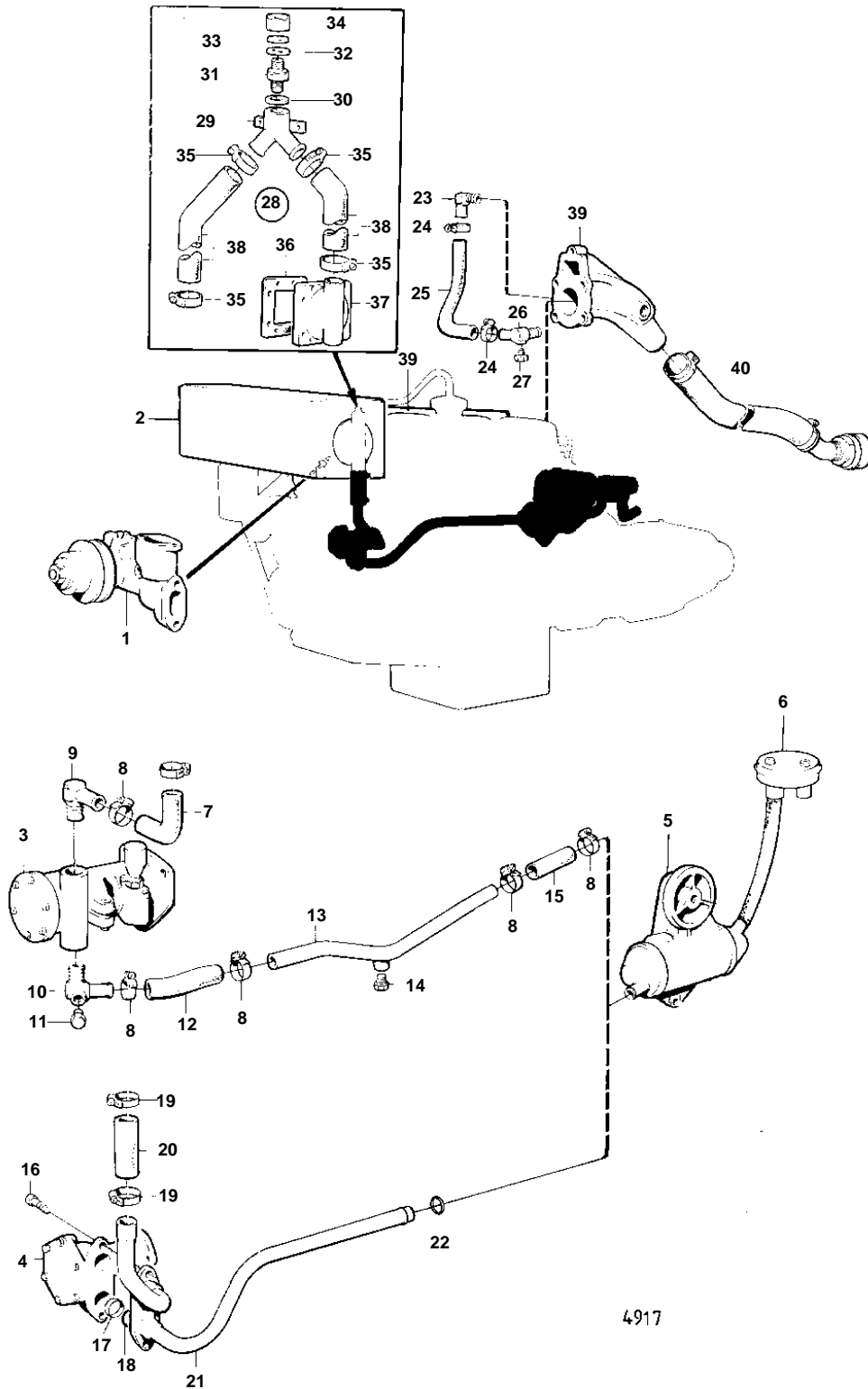


AQD21A



**AQD21A**

REF	PART NO.	QTY	DESCRIPTION	SEE SEC.	NOTES
1		1	CIRKULATION PUMP AND INSTALLATION COMPONENTS	12801	
2		1	HEAT EXCHANGER WITH THERMOSTAT AND INSTALLATION COMPONENTS	12799	MO-XXXX/61164
		1	HEAT EXCHANGER WITH THERMOSTAT AND INSTALLATION COMPONENTS	12800	MOXXXX/61165-
3		1	SEA WATER PUMP AND INSTALLATION COMPONENTS	12802	MO-XXXX/103386
4		1	SEA WATER PUMP AND INSTALLATION COMPONENTS	12776	MOXXXX/103387-
5		1	OIL COOLER WITH INSTALLATION COMPONENTS	12798	
6		1	SEA WATER FILTER AND INSTALLATION COMPONENTS	12798	
7	826224	1	Hose		MO-XXXX/103386
8	943475	6	Hose clamp, CLAMP		(951791) MO-XXXX/103386
				12798	
9		1	Elbow nipple		MO-XXXX/103386
10		1	Hose nipple		MO-XXXX/103386
11	192134	1	Plug		MO-XXXX/103386
12		X	Rubber hose		MO-XXXX/103386 L = 120 MM
13		1	Tube		MO-XXXX/103386
14	180759	1	Plug		MO-XXXX/103386
15		X	Rubber hose		MO-XXXX/103386 L = 80 MM
16	959437	2	Hex. socket screw		MOXXXX/103387-
17	423187	2	Ring retainer		MOXXXX/103387-
18	831617	2	Sealing ring		MOXXXX/103387-
19	943475	2	Hose clamp		(951791) MOXXXX/103387-
20		X	Rubber hose		MOXXXX/103387- L = 60 MM
21		1	Coolant pipe		MOXXXX/103387-
22	418412	1	Sealing ring, RING	12798	MOXXXX/103387-
23		1	Elbow nipple		
24	961668	1	Hose clamp		
25	952972	X	Hose		L = 500 MM
26		1	Hose nipple		
27	192134	1	Plug		
36				12800	
37	825683	1	End plate, HEAT EX COVER	12799 12800	
38		X	Rubber hose		
39			INDUCTION- AND EXHAUST MANIFOLD	12791	
40			WATER COOLED EXHAUST LINE		SEE GROUP 9
			WATER COOLED EXHAUST MUFFLER		SEE GROUP 9